

# XCKN2118P20

limit switch XCKN - thermoplastic roller lever -  
1NC+1NO - snap - M20

Product availability : Stock - Normally stocked in distribution facility



Price\*\* : 22.40 USD



## Main

|                               |   |
|-------------------------------|---|
| Range of product              | OsiSense XC   |
| Series name                   | Standard format   |
| Product or component type     | Limit switch  |
| Device short name             | XCKN  |
| Sensor design                 | Compact form A  |
| Body type                     | Fixed   |
| Head type                     | Rotary head   |
| Material                      | Plastic   |
| Body material                 | Plastic   |
| Head material                 | Plastic   |
| Fixing mode                   | By the body   |
| Movement of operating head    | Rotary  |
| Type of operator              | Spring return roller lever thermoplastic                            |
| Type of approach              | Lateral approach, 2 directions                                      |
| Cable entry                   | 1 entry tapped for M20 x 1.5 cable gland 0.28...0.51 in (7...13 mm) |
| Number of poles               | 2   |
| Contacts type and composition | 1 NC + 1 NO   |
| Contact operation             | Snap action   |

## Complementary

|                                 |  |
|---------------------------------|--|
| Tracks                          | 24/40 mm   |
| Switch actuation                | By 30° cam   |
| Electrical connection           | Screw-clamp terminals 1 x 0.34...2 x 1.5 mm <sup>2</sup> |
| Contacts insulation form        | Zb   |
| Positive opening                | With   |
| Positive opening minimum torque | 1.33 lbf.in (0.15 N.m)                                   |

|  |   |
|--|---|
| Minimum torque for tripping            | 0.89 lbf.in (0.1 N.m)   |
| Maximum actuation speed                | 4.92 ft/s (1.5 m/s)   |
| Contact code designation               | A300, AC-15 (Ue = 240 V), Ie = 3 A 10 A EN/IEC 60947-5-1 appendix A<br>R300, DC-13 (Ue = 250 V), Ie = 0.1 A EN/IEC 60947-5-1 appendix A   |
| [Ui] rated insulation voltage          | 300 VUL 508<br>500 V 3)IEC 60947-1<br>300 VCSA C22.2 No 14  |
| [Uimp] rated impulse withstand voltage | 6 kV IEC 60664<br>6 kV IEC 60947-1  |
| Short-circuit protection               | 10 A cartridge fuse gG  |
| Electrical durability                  | 5000000 cycles, DC-13, 120 V, 4 W 60 cyc/mn 0.5 IEC 60947-5-1 appendix C<br>5000000 cycles, DC-13, 24 V, 10 W 60 cyc/mn 0.5 IEC 60947-5-1 appendix C<br>5000000 cycles, DC-13, 48 V, 7 W 60 cyc/mn 0.5 IEC 60947-5-1 appendix C |
| Mechanical durability                  | 10000000 cycles   |
| Width                                  | 1.18 in (30 mm)   |
| Height                                 | 4.25 in (108 mm)  |
| Depth                                  | 1.75 in (44.5 mm)   |
| Net weight                             | 0.39 lb(US) (0.175 kg)  |
| Terminals description ISO n°1          | (13-14)NO<br>(21-22)NC  |

## Environment

|                                       |   |
|---------------------------------------|---|
| Shock resistance                      | 45 gn 11 ms IEC 60068-2-27  |
| Vibration resistance                  | 25 gn 10...500 Hz)IEC 60068-2-6   |
| IP degree of protection               | IP65 IEC 60529  |
| IK degree of protection               | IK04 EN 50102   |
| Overvoltage category                  | Class II IEC 61140<br>Class II NF C 20-030  |
| Ambient air temperature for operation | -13...158 °F (-25...70 °C)  |
| Ambient air temperature for storage   | -40...158 °F (-40...70 °C)  |
| Protective treatment                  | TC  |
| Product certifications                | CCC<br>UL<br>CSA  |
| Standards                             | EN 60947-5-1<br>UL 508<br>IEC 60947-5-1<br>EN 60204-1<br>IEC 60204-1<br>CSA C22.2 No 14 |

## Ordering and shipping details

|                     |                                 |
|---------------------|---------------------------------|
| Category            | 22435 - LIMIT SWITCHES,TYPE XCM |
| Discount Schedule   | T                               |
| GTIN                | 00785901968856                  |
| Package weight(Lbs) | 0.10 kg (0.23 lb(US))           |
| Returnability       | Yes                             |
| Country of origin   | ID                              |

## Offer Sustainability

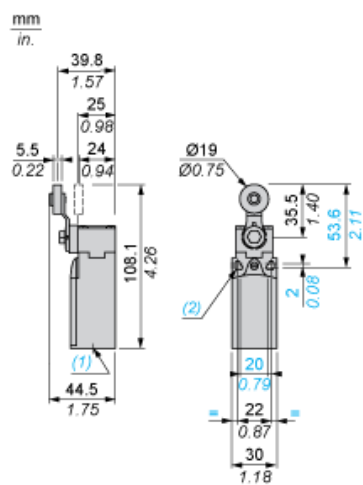
|                           |  |
|---------------------------|--|
| Sustainable offer status  | Green Premium product  |
| California proposition 65 | WARNING: This product can expose you to chemicals including: Di-isodecyl phthalate (DIDP) and Diisononyl phthalate (DINP) which is known to the State of California to cause Carcinogen and Reproductive harm. For more information go to <a href="http://www.p65warnings.ca.gov">www.p65warnings.ca.gov</a> |
| REACH Regulation          | <a href="#">REACH Declaration</a>  |
| EU RoHS Directive         | Pro-active compliance (Product out of EU RoHS legal scope)<br><a href="#">EU RoHS Declaration</a>  |

|                            |   |
|----------------------------|---|
| Mercury free               | Yes   |
| RoHS exemption information | <a href="#">Yes</a>   |
| Environmental Disclosure   | <a href="#">Product Environmental Profile</a>                                       |
| Circularity Profile        | No need of specific recycling operations<br><a href="#">End of Life Information</a> |

### Contractual warranty

|          |           |
|----------|-----------|
| Warranty | 18 months |
|----------|-----------|

## Dimensions



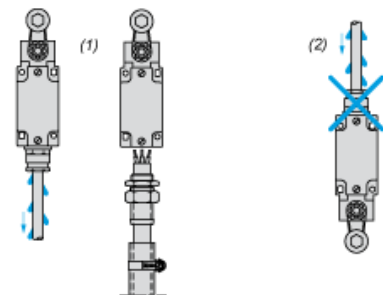
- (1) 1 tapped entry for M20 x 1.5  
(2)  $\varnothing$ : 2 elongated holes  $\varnothing 4.3 \times 6.3$  on 22 mm centres, 2 holes  $\varnothing 4.3$  on 20 mm centres.

---

Mounting with Cable Entry

---

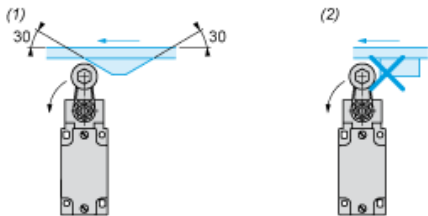
Position of Cable Gland



- (1) Recommended  
(2) To be avoided

Mounting with Rotary Heads and Levers

Type of Cam



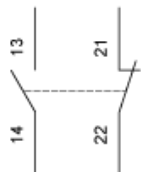
- (1) Recommended
- (2) To be avoided

---

Wiring Diagram

---

2-pole NC + NO Snap Action

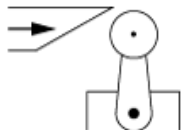


---

Characteristics of Actuation

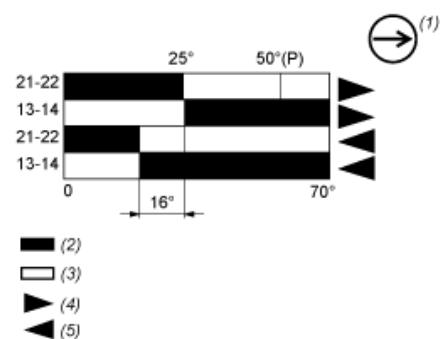
---

Switch Actuation by 30° Cam





## Functionnal Diagram



- (P) Positive opening point  
(1) NC contact with positive opening operation  
(2) Closed  
(3) Open  
(4) Tripping  
(5) Resetting

XCKN2118P20 is replaced by the following group of products:



### Miniature range ZCE01

Osiswitch, limit switch head, ZCE, without lever, spring return, left and right actuation

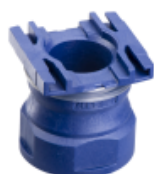
Qty 1



### Compact range ZCP21

Osiswitch, limit switch body, ZCP, compact body, 1 NC and 1 NO, snap action

Qty 1



### Compact range ZCPEP20

cable gland entry - M20 x 1.5 - for limit switch - plastic body

Qty 1



## Miniature range ZCY18

limit switch lever ZCY - thermoplastic roller lever

Qty 1

Reason for Substitution: End of life | Substitution date: 01 January 2017